

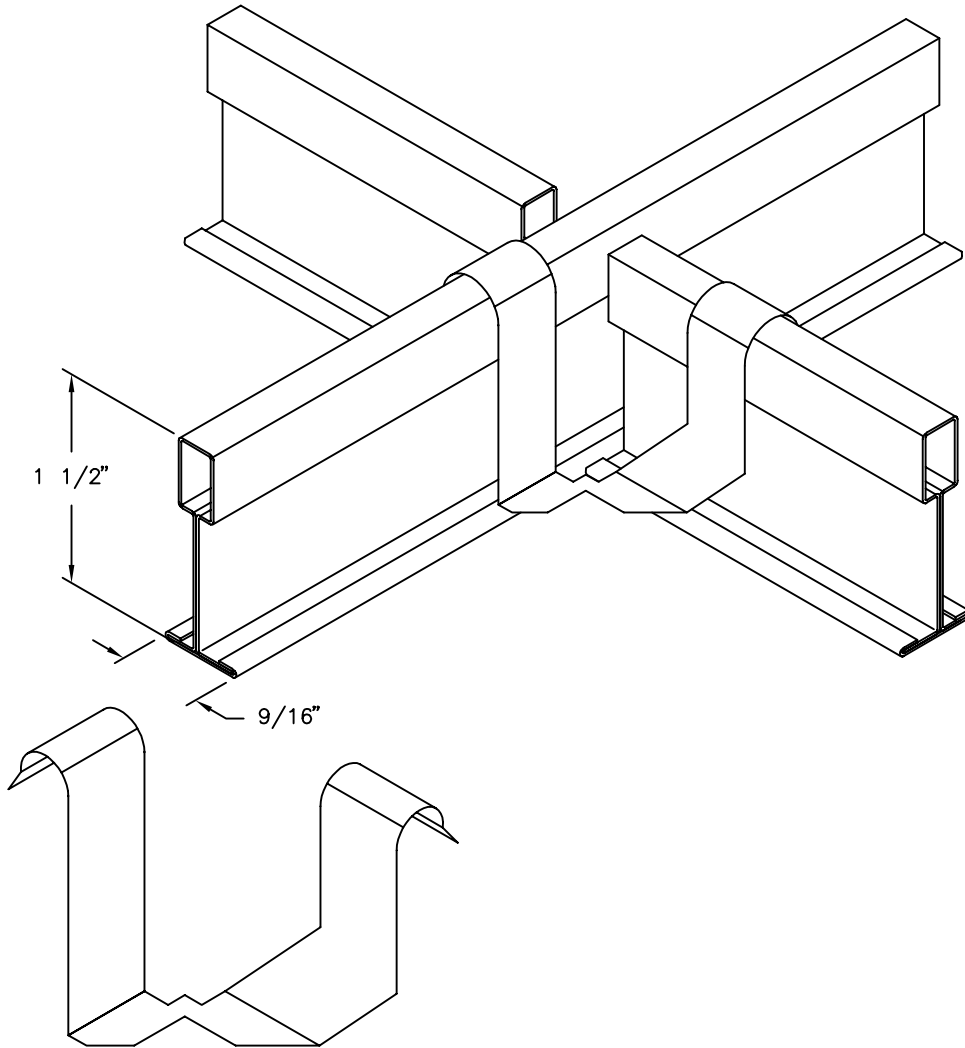
PRICE[®]

SUBMITTAL DRAWING



TMS  **JOHNSON**
Trusted Partner • Reliable Solutions

TMS Johnson, Inc. | 763-544-5442 | www.tmsj.com
Twin Cities: 2908 Nevada Ave N, New Hope, MN 55427
Rochester: 3270 19th St NW, Suite 210, Rochester, MN 55901



916 CLIP

NOTES:

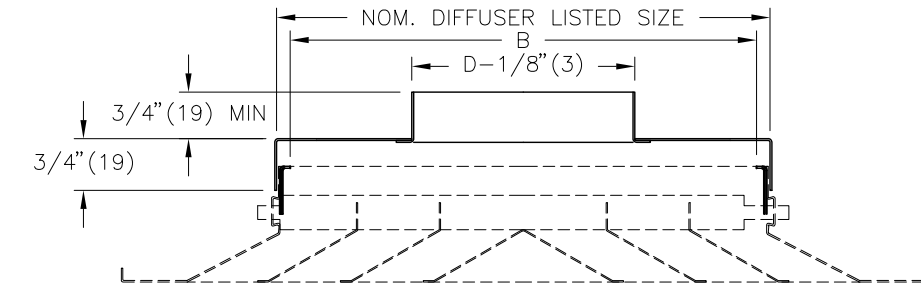
- PREFINISHED WHITE FOR USE AT CORNERS OF CEILING DIFFUSERS AND GRILLES ON 9/16" FLAT CEILING TEE GRID.
- INCREASES CORNER SIZE TO 15/16" FLAT CEILING TEE EQUIVALENT.
- USE FOUR 916 CLIPS PER DIFFUSER OR GRILLE.
- MAXIMUM TEE HEIGHT 1 1/2". AT LEAST ONE TEE SHOULD BE 1 1/2" WHEN USING 916 CLIPS.

ALL METRIC DIMENSIONS () ARE SOFT CONVERTED. IMPERIAL DIMENSIONS ARE CONVERTED TO METRIC AND ROUNDED TO THE NEAREST MILLIMETER.

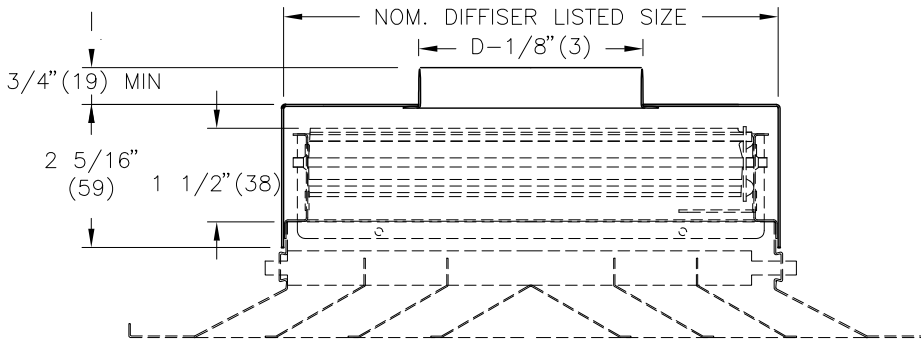
PROJECT:		PRICE[®]	
ENGINEER:		<i>DS</i>	ACCESSORY 916 CLIP
CUSTOMER:		232012	
SUBMITTAL DATE:	SPEC. SYMBOL:	APRIL 2000	

SR ROUND NECK ADAPTOR

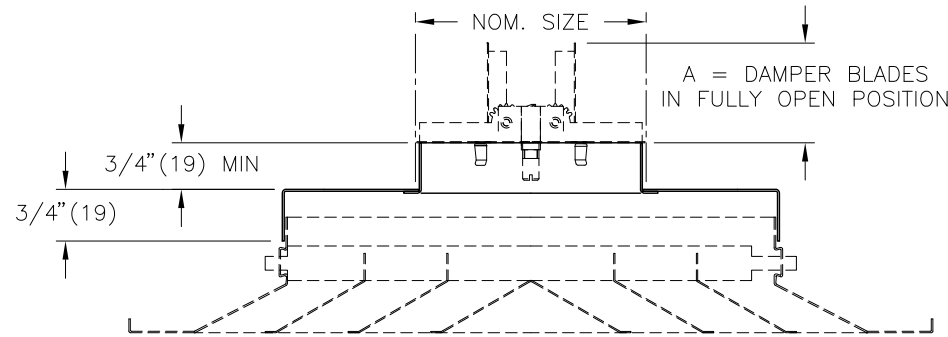
- SR
- SR9



- SR2
- SR3
- SR3AL



- SR8E



VCR9 DUCT SIZE	B
6	5 1/2 (140)
8	7 1/2 (191)
10	9 1/2 (241)
12	11 1/2 (292)
14	13 1/2 (343)

VCR8E DUCT SIZE	A
4	1 3/4 (44)
5	2 1/4 (57)
6	2 3/4 (70)
7	3 1/4 (82)
8	3 3/4 (95)
10	4 3/4 (120)
12	5 3/4 (146)
14	6 3/4 (171)
15	7 1/4 (184)

Rd Inlet Size	Nom. Size
4,5,6	6 x 6
5,6,7,8	8 x 8
5,6,7,8,9	9 x 9
5,6,7,8,9,10	10 x 10
5,6,7,8,9,10,12	12 x 12
5,6,7,8,9,10,12,14	14 x 14
5,6,7,8,9,10,12,14,15	15 x 15
5,6,7,8,9,10,12,14,15,16	16 x 16
5,6,7,8,9,10,12,14,15,16,18	18 x 18
6	18 x 6
5,6,7,8,9,10,12,14,15,16,18,20	20 x 20
5,6,7,8,9,10,12,14,15,16,18,20,21	21 x 21
5,6,7,8,9,10,12,14,15,16,18,20,22	22 x 22
5,6,7,8,9,10	22 x 10
5,6,7,8,9,10,12,14,15,16,18,20,22,24	24 x 24

NOTES:

- SR 3/4" DEEP SQUARE TO ROUND ADAPTOR ONLY
 - SR2 2 5/16" DEEP SQUARE TO ROUND ADAPTOR ONLY
 - SR3 SQUARE TO ROUND ADAPTOR WITH COATED STEEL OPPOSED BLADE DAMPER
 - SR3AL SQUARE TO ROUND ADAPTOR WITH ALUM OPPOSED BLADE DAMPER
 - SR8E SQUARE TO ROUND ADAPTOR WITH STEEL BUTTERFLY VOLUME CONTROL DAMPER. DAMPERS ARE ONLY AVAILABLE IN DUCT SIZES 4 TO 15
 - SR9 SQUARE TO ROUND ADAPTOR WITH RADIAL DAMPER ACCESSORY
- FACTORY TOLERANCE: ± 1/32" (1)

MATERIAL:

- COATED STEEL

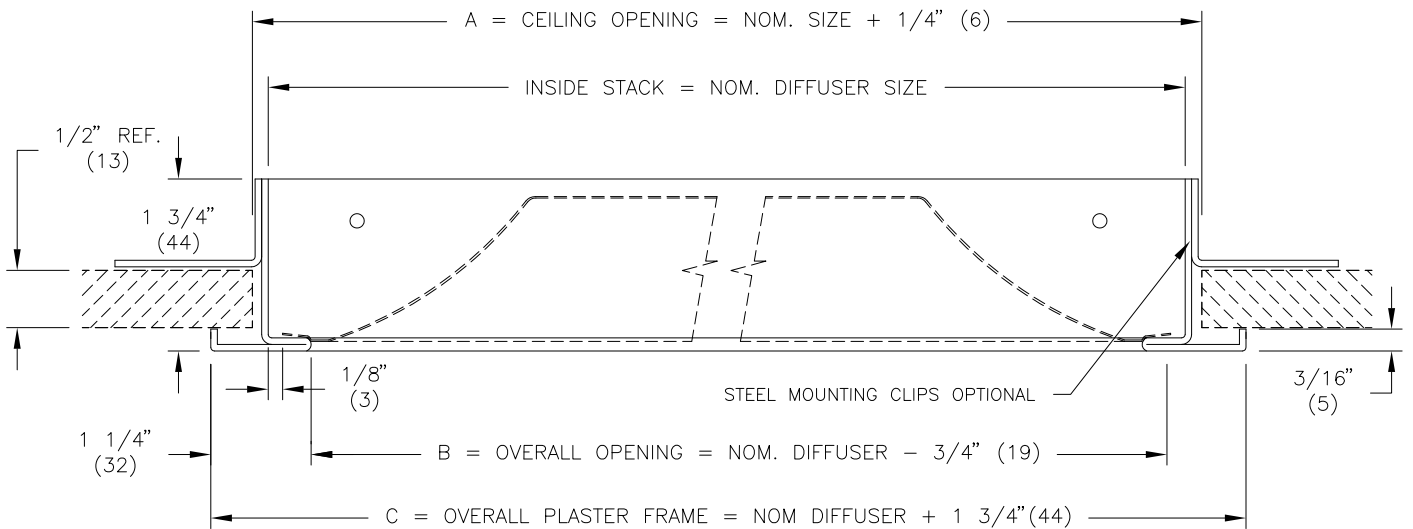
FINISH:

- MILL

ALL METRIC DIMENSIONS () ARE SOFT CONVERTED. IMPERIAL DIMENSIONS ARE CONVERTED TO METRIC AND ROUNDED TO THE NEAREST MILLIMETER.

PROJECT:		PRICE®	
ENGINEER:		<i>R</i>	SR
CUSTOMER:		222044	ROUND NECK ADAPTOR
SUBMITTAL DATE:	SPEC. SYMBOL:	2010/02/11	

SPF - STEEL PLASTER FRAME



TYPICAL CROSS SECTION OF LAY-IN TYPE DIFFUSER FRAME FOR DRYWALL APPLICATION

IMPERIAL SIZE			
NOMINAL SIZE	A	B	C
12" X 12"	12 1/4" X 12 1/4"	11 1/4" X 11 1/4"	13 3/4" X 13 3/4"
14" X 14"	14 1/4" X 14 1/4"	15 1/4" X 15 1/4"	17 3/4" X 17 3/4"
15" X 15"	15 1/4" X 15 1/4"	14 1/4" X 14 1/4"	16 3/4" X 16 3/4"
16" X 16"	16 1/4" X 16 1/4"	15 1/4" X 15 1/4"	17 3/4" X 17 3/4"
18" X 18"	18 1/4" X 18 1/4"	17 1/4" X 17 1/4"	19 3/4" X 19 3/4"
20" X 20"	20 1/4" X 20 1/4"	19 1/4" X 19 1/4"	21 3/4" X 21 3/4"
24" X 12"	24 1/4" X 12 1/4"	23 1/4" X 11 1/4"	25 3/4" X 13 3/4"
24" X 24"	24 1/4" X 24 1/4"	23 1/4" X 23 1/4"	25 3/4" X 25 3/4"
48" X 24"	48 1/4" X 24 1/4"	47 1/4" X 23 1/4"	49 3/4" X 25 3/4"

MATERIAL:

- HEAVY GAUGE STEEL

FINISH:

- B12 WHITE (OPTIONAL FINISHES AVAILABLE)

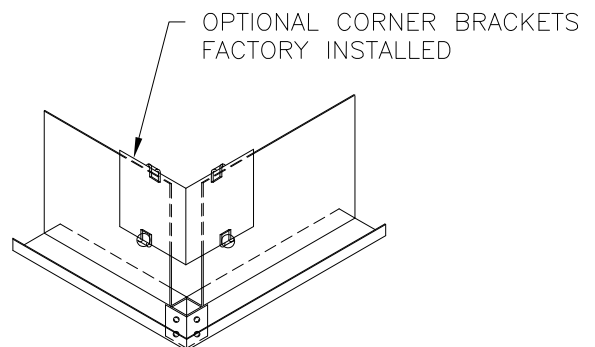
NOTES:

- FACTORY TOLERANCE - $\pm 1/32"$ ($\pm 1\text{mm}$)

OPTIONS:

- MC-MOUNTING CLIPS
- CB-CORNER BRACKETS

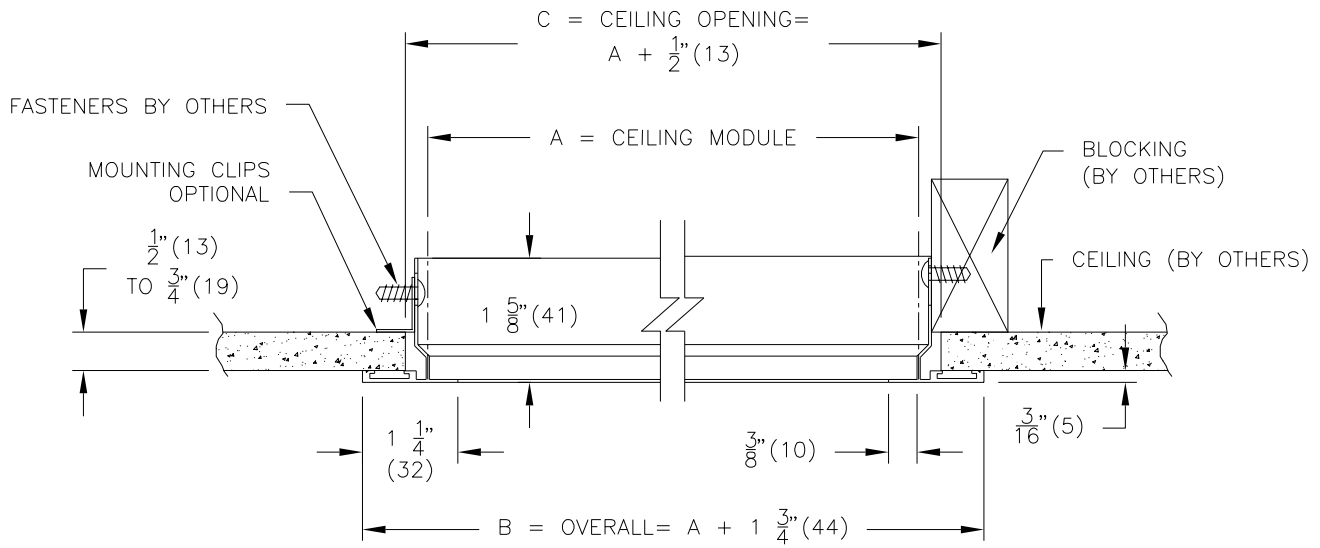
METRIC SIZE			
NOMINAL SIZE	A	B	C
300 X 300	306 X 306	281 X 281	344 X 344
500 X 500	506 X 506	481 X 481	544 X 544
600 X 600	606 X 606	581 X 581	644 X 644



ALL METRIC DIMENSIONS () ARE SOFT CONVERTED. IMPERIAL DIMENSIONS ARE CONVERTED TO METRIC AND ROUNDED TO THE NEAREST MILLIMETER.

PROJECT:		PRICE [®]	
ENGINEER:		<i>MG</i>	SPF
CUSTOMER:		228211	STEEL LAY-IN TYPE PLASTER FRAME
SUBMITTAL DATE:	SPEC. SYMBOL:	2015/04/02	

AMF - ALUMINUM MOUNTING FRAME



AMF - TYPICAL CEILING DIFFUSER APPLICATION

IMPERIAL SIZE		
NOM. CEILING DIFFUSER SIZE (A)	B	C
<input type="checkbox"/> 12" X 12"	13 3/4" X 13 3/4"	12 1/2" X 12 1/2"
<input type="checkbox"/> 14" X 14"	15 3/4" X 15 3/4"	14 1/2" X 14 1/2"
<input type="checkbox"/> 15" X 15"	16 3/4" X 16 3/4"	15 1/2" X 15 1/2"
<input type="checkbox"/> 16" X 16"	17 3/4" X 17 3/4"	16 1/2" X 16 1/2"
<input type="checkbox"/> 18" X 18"	19 3/4" X 19 3/4"	18 1/2" X 18 1/2"
<input type="checkbox"/> 20" X 20"	21 3/4" X 21 3/4"	20 1/2" X 20 1/2"
<input type="checkbox"/> 24" X 12"	25 3/4" X 13 3/4"	24 1/2" X 12 1/2"
<input type="checkbox"/> 24" X 24"	25 3/4" X 25 3/4"	24 1/2" X 24 1/2"

METRIC SIZE		
NOM. CEILING DIFFUSER SIZE (A)	B	C
<input type="checkbox"/> (300 X 300)	(344 X 344)	(313 X 313)
<input type="checkbox"/> (500 X 500)	(544 X 544)	(513 X 513)
<input type="checkbox"/> (600 X 600)	(644 X 644)	(613 X 613)

MATERIAL:

- EXTRUDED ALUMINUM FRAME

FINISH:

- B12 WHITE
(OPTIONAL FINISHES AVAILABLE)

NOTES:

- FACTORY TOLERANCE - ± 1/32 (1)

OPTIONS:

- MC-MOUNTING CLIPS
(GALVANIZED STEEL)

PROJECT:



ENGINEER:

mg

CUSTOMER:

228773

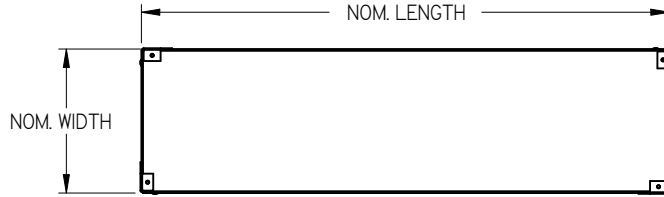
SUBMITTAL DATE:

SPEC. SYMBOL:

2015/04/02

AMF
ALUMINUM MOUNTING FRAME
FOR CEILING DIFFUSERS

LS - LIGHT SHIELD



STANDARD CONSTRUCTION:

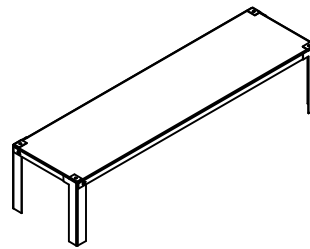
- STEEL CONSTRUCTION

FINISH:

- B17 BLACK

NOTES:

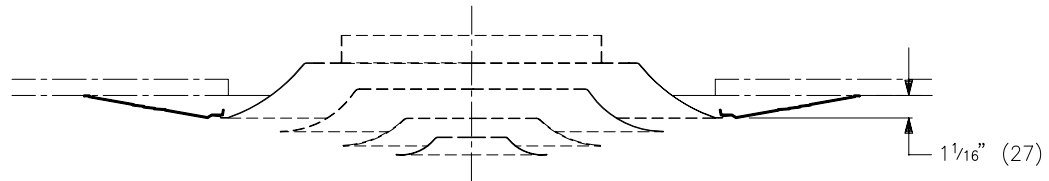
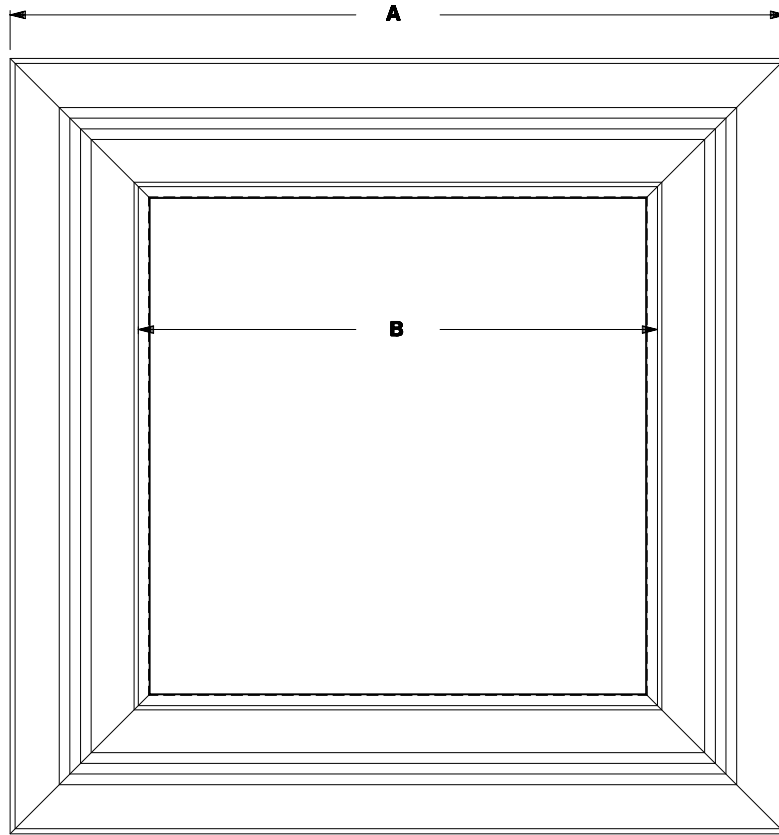
- FITS STANDARD GRILLES AND DIFFUSERS WITH SQUARE AND RECTANGULAR INLETS
- SHIPS WITH LEGS FOLDED FOR FIELD ASSEMBLY TO GRILLE
- MINIMUM SIZE 6"x4" (152x102)
- MAXIMUM SIZE 24"x24" (610x610)
- FACTORY TOLERANCE $\pm 1/32"$ (1)



ALL METRIC DIMENSIONS () ARE SOFT CONVERTED. IMPERIAL DIMENSIONS ARE CONVERTED TO METRIC AND ROUNDED TO THE NEAREST MILLIMETER.

PROJECT:		PRICE	LS LIGHT SHIELD
ENGINEER:			
CUSTOMER:		268855	
SUBMITTAL DATE:	SPEC. SYMBOL:	2017/08/24	

CCSQ ANTI SMUDGE FRAME



FINISH:

- B12 WHITE
(OPTIONAL FINISHES AVAILABLE)

MATERIAL:

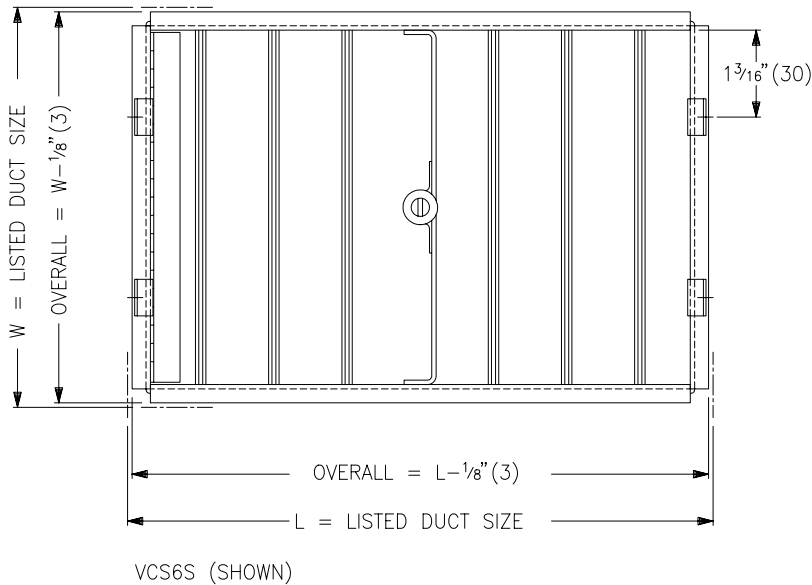
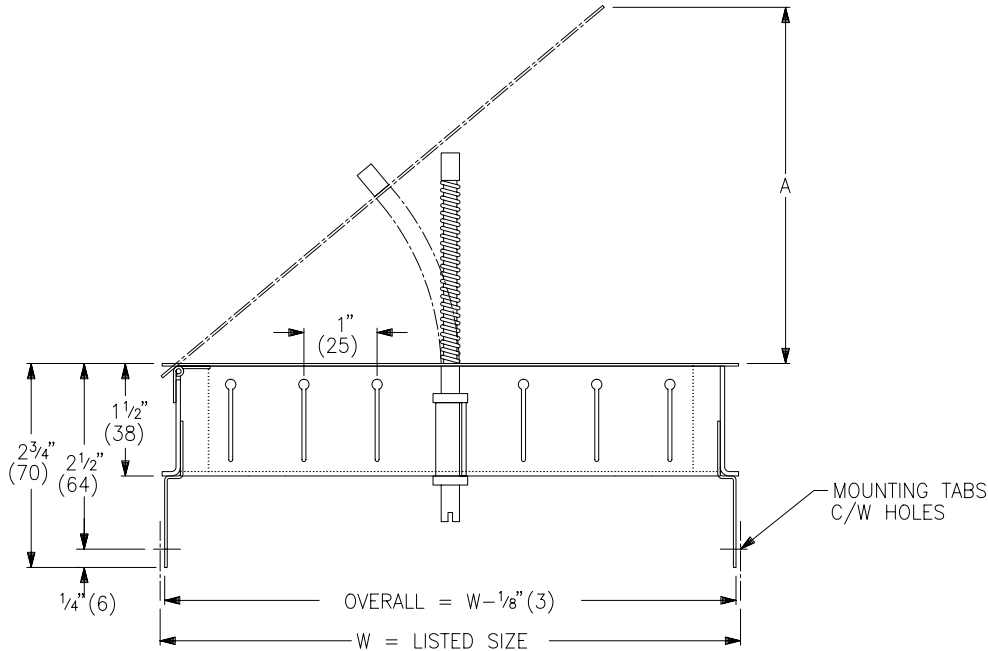
- STEEL CONSTRUCTION
- FACTORY TOL: $\pm 1/32$ (1)

DIFFUSER MODULE	A	B
SCD/31/12x12	23 ¹¹ / ₁₆ (602)	11 ¹³ / ₁₆ (300)
SCD/31/24x24	35 ¹¹ / ₁₆ (906)	23 ¹³ / ₁₆ (605)
SCDA/1/12x12	25 ³ / ₈ (645)	13 ¹ / ₂ (343)
SCDA/1/24x24	37 ³ / ₈ (949)	25 ¹ / ₂ (648)

ALL METRIC DIMENSIONS () ARE SOFT CONVERTED. IMPERIAL DIMENSIONS ARE CONVERTED TO METRIC AND ROUNDED TO THE NEAREST MILLIMETER.

PROJECT:		PRICE [®]	
ENGINEER:		<i>KL</i> 210914	CCSQ ANTI SMUDGE FRAME FOR SQUARE CEILING DIFFUSERS
CUSTOMER:			
SUBMITTAL DATE:	SPEC. SYMBOL:	MAY 97	

VCS6S,L DAMPER AND EQUALIZING GRID



FINISH:

- B17 BLACK

MATERIAL:

- FRAME & DAMPER – STEEL
- VANES – EXTRUDED ALUMINUM

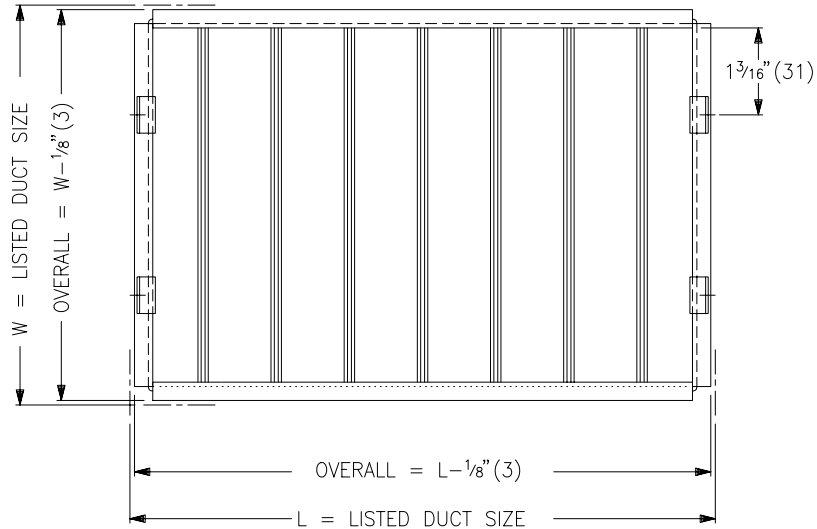
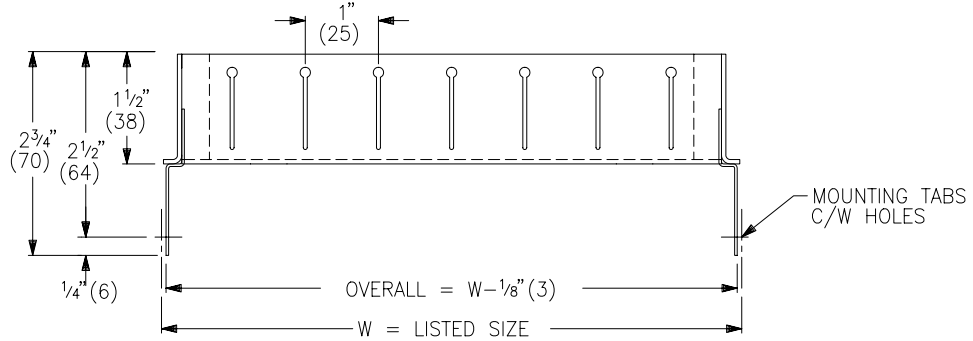
NOTES:

- 'A' DIMENSION:
FOR VCS6L, A = .6 x W
VCS6S, A = .6 x L
- LISTED DUCT SIZE = L x W (SQUARE OR RECTANGULAR)
- VCS6L – VANES PARALLEL TO LONG 'L' DIMENSION.
- VCS6S – VANES PARALLEL TO SHORT 'W' DIMENSION.
- MINIMUM SIZE: 4" X 4" (102X102)
- MAXIMUM SIZE: 30" X 30" (762X762)
- SIZES UP TO 12" X 12" (305X305) OR 1 SQ FT SUPPLIED c/w FLEX CABLE OPERATOR.
- LARGER SIZES SUPPLIED c/w THREADED ROD & SWIVEL NUT CONTROLLER.
- FACTORY TOLERANCE: $\pm 1/32"$ (1)

ALL METRIC DIMENSIONS () ARE SOFT CONVERTED. IMPERIAL DIMENSIONS ARE CONVERTED TO METRIC AND ROUNDED TO THE NEAREST MILLIMETER.

PROJECT:		PRICE [®]	
ENGINEER:		<i>David</i>	VCS6S,L DAMPER & EQUALIZING GRID
CUSTOMER:		210900	
SUBMITTAL DATE:	SPEC. SYMBOL:	MAY 93	

EGS & EGL EQUALIZING GRID FOR DIFFUSERS WITH SQUARE OR RECTANGULAR NECKS



EGS (SHOWN)

FINISH:

- B17 BLACK

MATERIAL:

- FRAME - STEEL
- VANES - EXTRUDED ALUMINUM

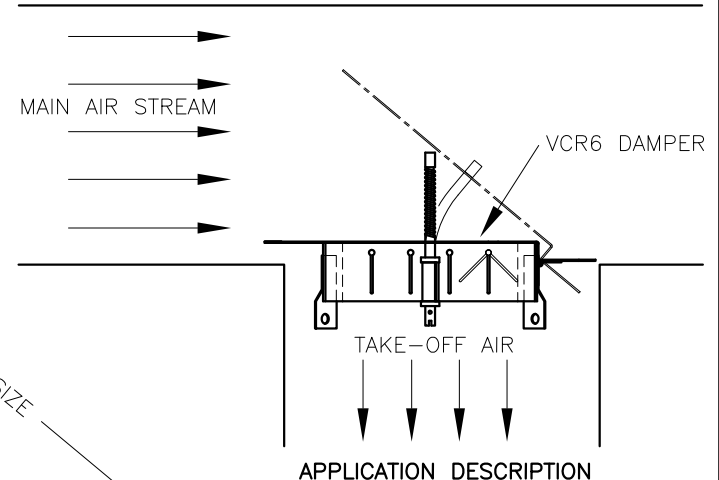
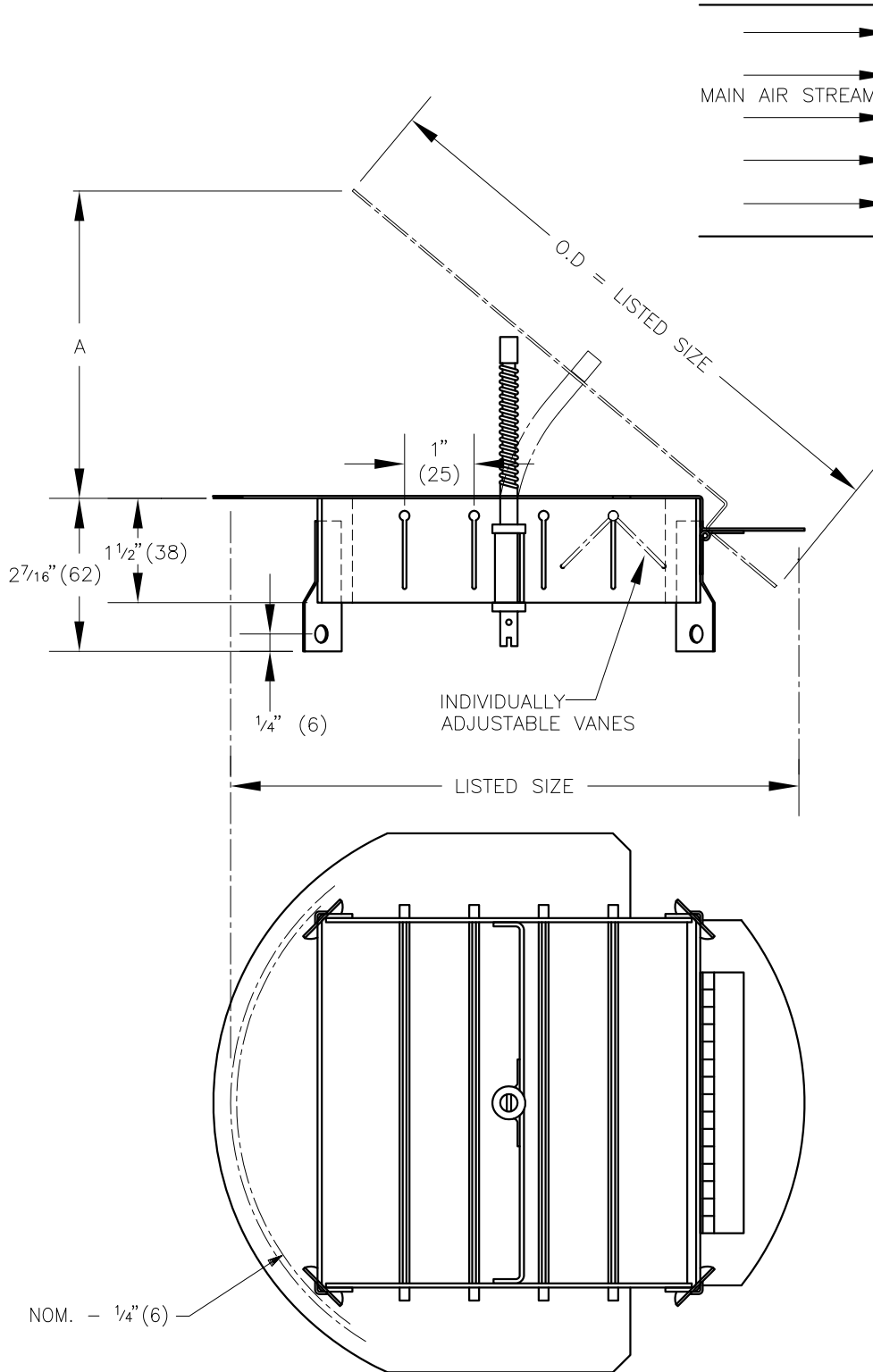
NOTES:

- LISTED DUCT SIZE = L x W (SQUARE OR RECTANGULAR)
- EGL - VANES PARALLEL TO LONG 'L' DIMENSION
- EGS - VANES PARALLEL TO SHORT 'W' DIMENSION
- MAXIMUM SIZE 30" x 30" (762x762)
- FACTORY TOLERANCE: ± 1/32" (1)

ALL METRIC DIMENSIONS () ARE SOFT CONVERTED. IMPERIAL DIMENSIONS ARE CONVERTED TO METRIC AND ROUNDED TO THE NEAREST MILLIMETER.

PROJECT:		PRICE [®]	
ENGINEER:		<i>David</i>	EGS & EGL
CUSTOMER:		210901	EQUALIZING GRID
SUBMITTAL DATE:	SPEC. SYMBOL:	MAY 93	

VCR6 COMBINATION DAMPER & GRID



FINISH:
 • B17 BLACK

MATERIAL:
 • FRAME & DAMPER – STEEL
 • VANES – EXTRUDED ALUMINUM

NOTES:

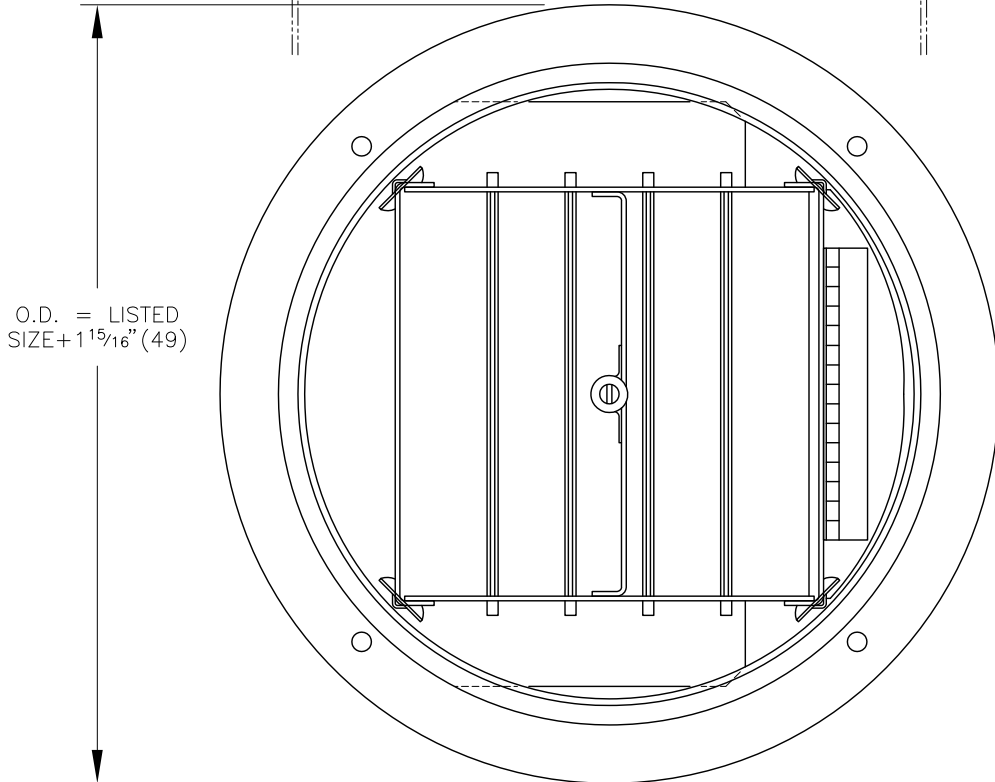
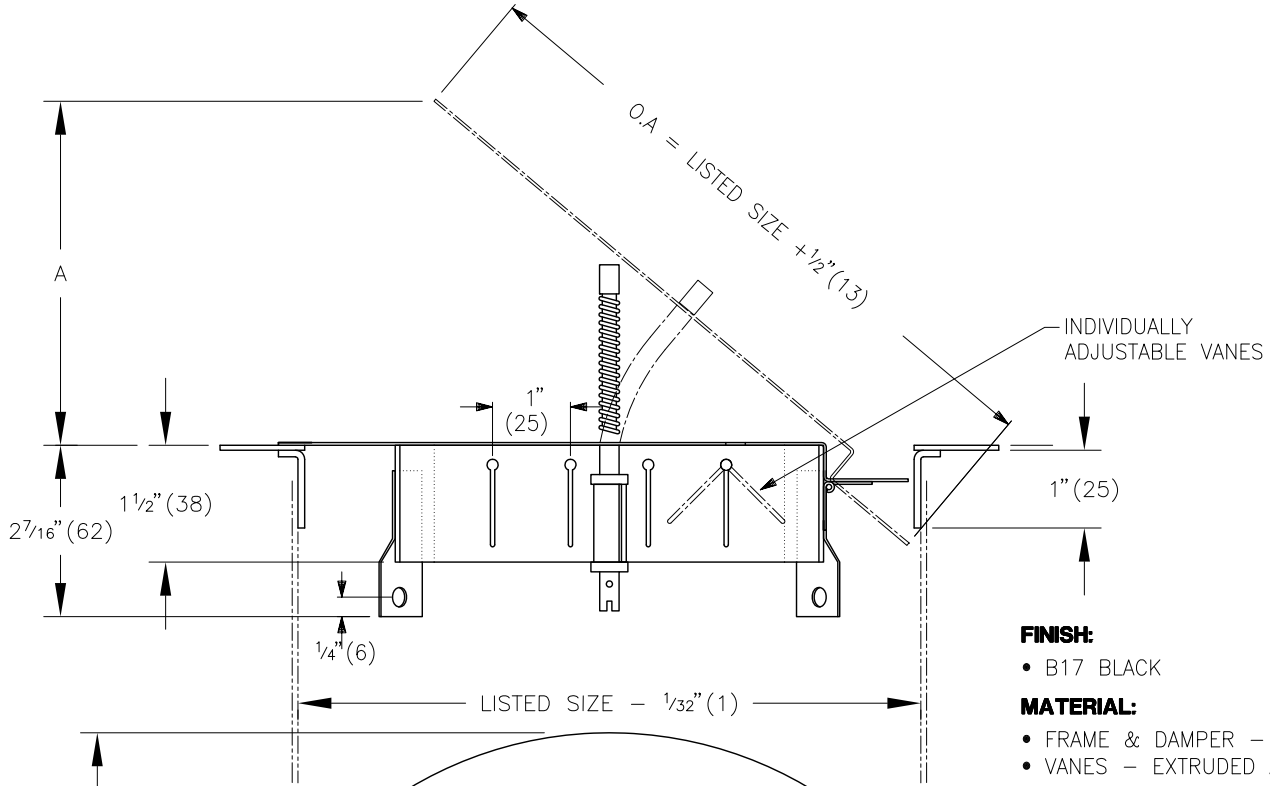
- SIZES 4" (102) THROUGH 12" (305), c/w FLEX CABLE CONTROLLER.
- SIZES 14" (356) THROUGH 36" (914) c/w THREADED ROD & SWIVEL NUT CONTROLLER.
- BLADE OPENS UP DIRECTLY INTO AIR STREAM PERMITTING PRECISION AIR VOLUME CONTROL. INSTALLS FLUSH WITH DUCT TAKE-OFF.
- SQUARE GRID AS SHOWN FOR SIZES UP TO 10" (254). T-SHAPE GRID FOR SIZES 12" (305) AND UP.
- FACTORY TOLERANCE: ± 1/32" (1)

LISTED SIZE	A
4" (102)	2 1/4" (57)
5" (127)	2 13/16" (71)
6" (152)	3 3/8" (86)
7" (178)	3 15/16" (100)
8" (203)	4 7/16" (113)
10" (254)	5 9/16" (141)
12" (305)	7 1/8" (181)
14" (356)	8 5/8" (219)
15" (381)	9" (229)
16" (406)	9 7/8" (251)
18" (457)	11" (279)
20" (508)	12 1/4" (311)
24" (610)	14 13/16" (376)
30" (762)	17 1/2" (445)
36" (914)	21 3/4" (553)

ALL METRIC DIMENSIONS () ARE SOFT CONVERTED. IMPERIAL DIMENSIONS ARE CONVERTED TO METRIC AND ROUNDED TO THE NEAREST MILLIMETER.

PROJECT:		PRICE [®]	
ENGINEER:		<i>RV</i>	VCR6
CUSTOMER:			
SUBMITTAL DATE:	SPEC. SYMBOL:	2011/02/28	COMBINATION DAMPER & GRID

VCR6DR COMBINATION DAMPER & GRID c/w DUCT RING



FINISH:

- B17 BLACK

MATERIAL:

- FRAME & DAMPER – STEEL
- VANES – EXTRUDED ALUMINUM

NOTES:

- SIZES 4" (102) THROUGH 12" (305), c/w FLEX CABLE CONTROLLER.
- SIZES 14" (356) THROUGH 36" (914) c/w THREADED ROD & SWIVEL NUT CONTROLLER.
- SQUARE GRID AS SHOWN FOR SIZES UP TO 10" (254). T-SHAPE GRID FOR SIZES 12" (305) AND UP.
- FACTORY TOLERANCE: ± 1/32" (1)

LISTED SIZE	A
4" (102)	2 1/4" (57)
5" (127)	2 13/16" (71)
6" (152)	3 3/8" (86)
7" (178)	3 15/16" (100)
8" (203)	4 7/16" (113)
10" (254)	5 9/16" (141)
12" (305)	7 1/8" (181)
14" (356)	8 5/8" (219)
15" (381)	9" (229)
16" (406)	9 7/8" (251)
18" (457)	11" (279)
20" (508)	12 1/4" (311)
24" (610)	14 13/16" (376)
30" (762)	17 1/2" (445)
36" (914)	21 3/4" (553)

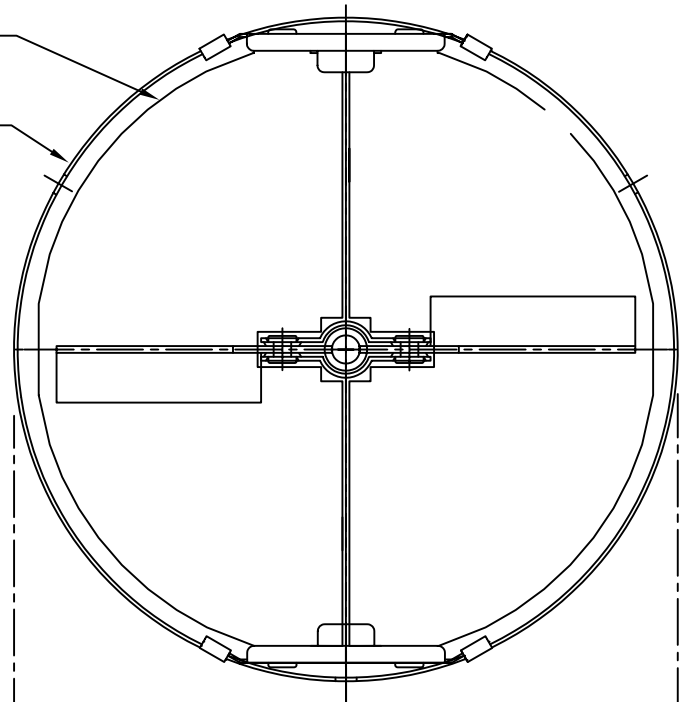
ALL METRIC DIMENSIONS () ARE SOFT CONVERTED. IMPERIAL DIMENSIONS ARE CONVERTED TO METRIC AND ROUNDED TO THE NEAREST MILLIMETER.

PROJECT:		PRICE [®]	
ENGINEER:			
CUSTOMER:		222077	VCR6DR COMBINATION DAMPER & GRID C/W DUCT RING
SUBMITTAL DATE:	SPEC. SYMBOL:	2011/02/28	

MODEL VCR8 ROUND DAMPER

DAMPER BLADES IN FULLY CLOSED POSITION.

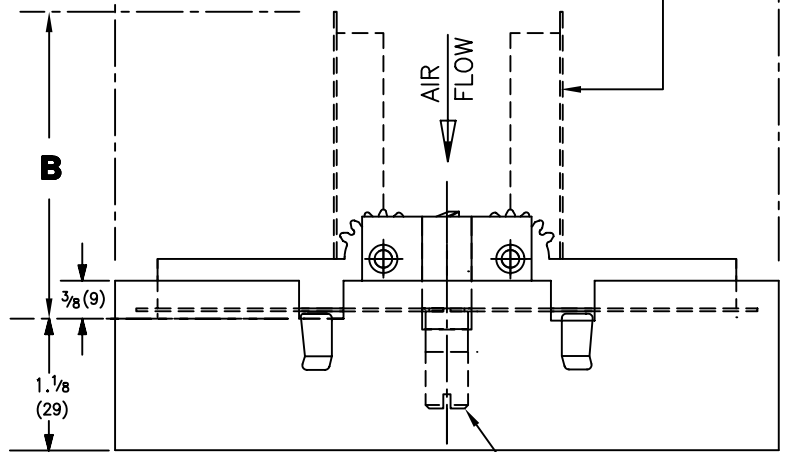
DAMPER SLEEVE FOR MOUNTING INTO RIGID DUCT.



TOP VIEW OF DAMPER

A ± 1/16

DAMPER BLADES IN FULLY OPEN POSITION.



SIDE VIEW OF DAMPER

USE STD. FLAT BLADE SCREWDRIVER TO OPERATE DAMPER.

DUCT SIZE	IMPERIAL UNITS		S I UNITS	
	A	B	A	B
4	3 7/8	1 3/4	98	44
5	4 7/8	2 1/4	124	57
6	5 7/8	2 3/4	150	70
7	6 7/8	3 1/4	175	82
8	7 7/8	3 3/4	200	95
10	9 7/8	4 3/4	250	120
12	11 7/8	5 3/4	302	146
14	13 7/8	6 3/4	352	171
15	14 7/8	7 1/4	378	184
16	15 7/8	7 3/4	403	197

NOTE:

- MATERIAL = COATED STEEL-MILL FINISH
- DAMPER CONTROLS AIR VOLUME FROM FULL OPEN TO FULL CLOSED.
- DAMPER MOUNTS DIRECTLY INTO RIGID DUCT, SIZES 5 TO 16 HAVE 3-MTG. HOLES, SIZE 4 HAS 2-MOUNTING HOLES.
- RIGID DUCT APPLICATION ONLY.

ALL METRIC DIMENSIONS () ARE SOFT CONVERTED. IMPERIAL DIMENSIONS ARE CONVERTED TO METRIC AND ROUNDED TO THE NEAREST MILLIMETER.

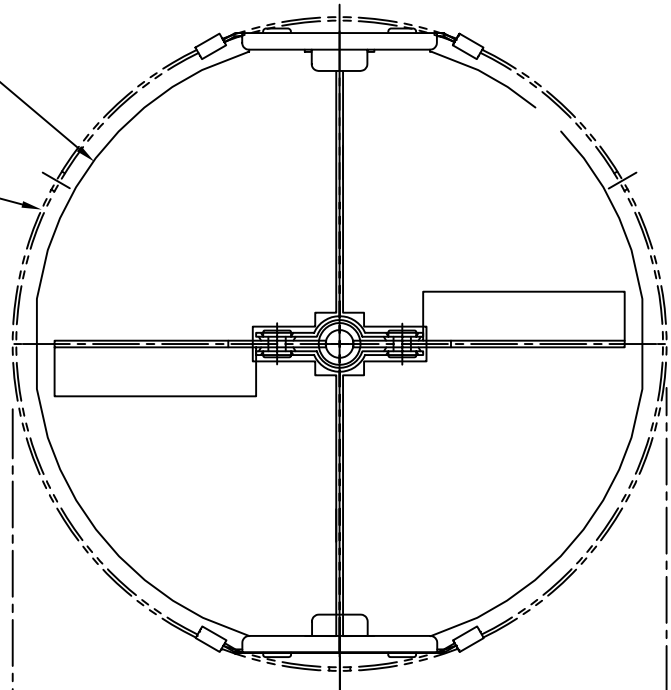
PROJECT:		PRICE [®]	
ENGINEER:			VCR8 FULL FLOW DAMPER DUCT MOUNTED
CUSTOMER:			
SUBMITTAL DATE:	SPEC. SYMBOL:	MAY 04	

MODEL VCR8E ROUND DAMPER

DAMPER BLADES IN FULLY CLOSED POSITION.

REFERENCE OUTLINE OF DIFFUSER NECK-INLET

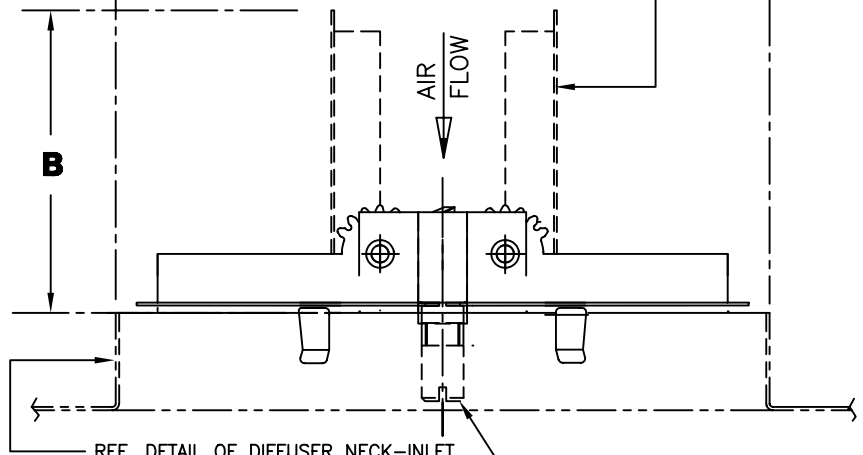
DUCT SIZE	IMPERIAL UNITS		S I UNITS	
	A	B	A	B
NOM.				
4	3 ⁷ / ₈	1 ³ / ₄	98	44
5	4 ⁷ / ₈	2 ¹ / ₄	124	57
6	5 ⁷ / ₈	2 ³ / ₄	150	70
7	6 ⁷ / ₈	3 ¹ / ₄	175	82
8	7 ⁷ / ₈	3 ³ / ₄	200	95
10	9 ⁷ / ₈	4 ³ / ₄	250	120
12	11 ⁷ / ₈	5 ³ / ₄	302	146
14	13 ⁷ / ₈	6 ³ / ₄	352	171
15	14 ⁷ / ₈	7 ¹ / ₄	378	184
16	15 ⁷ / ₈	7 ³ / ₄	403	197



TOP VIEW OF DAMPER

A ± 1/32

DAMPER BLADES IN FULLY OPEN POSITION.



SIDE VIEW OF DAMPER

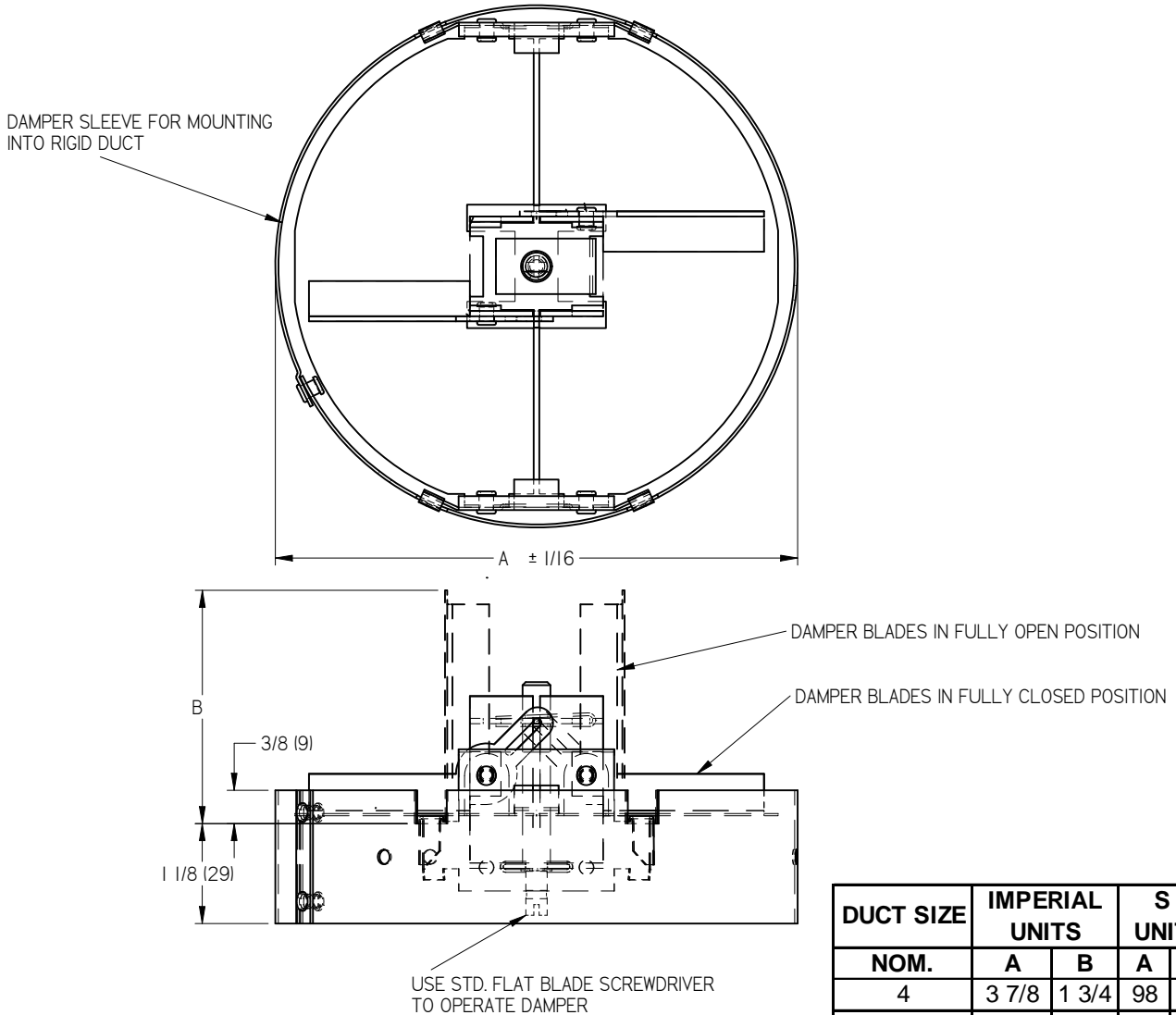
NOTE:

- MATERIAL = COATED STEEL, - MILL FINISH
- DAMPER CONTROLS AIR VOLUME FROM FULL OPEN TO FULL CLOSED.
- DAMPER MOUNTS DIRECTLY ONTO DIFFUSER NECK-INLET. NOMINAL INLET SIZES ARE 4 TO 16. *
- FLEX DUCT CONNECTION CAUTION: FOR UNOBSTRUCTED DAMPERING, IN TIGHT ELBOWED CONDITIONS, SET THE DAMPER BLADES IN THE FULL OPEN POSITION PRIOR TO FIELD CONNECTION.
- * CANNOT BE MOUNTED ON DIFFUSER NECK ON MODELS RCD, RCDA, RCDE.

ALL METRIC DIMENSIONS () ARE SOFT CONVERTED. IMPERIAL DIMENSIONS ARE CONVERTED TO METRIC AND ROUNDED TO THE NEAREST MILLIMETER.

PROJECT:		PRICE®	
ENGINEER:		RV	VCR8E FULL FLOW DAMPER DIFFUSER MOUNTED
CUSTOMER:		222755	
SUBMITTAL DATE:	SPEC. SYMBOL:	MAY 04	

VCR8SS - FULL FLOW DAMPER DUCT MOUNTED





MATERIAL:
 STAINLESS STEEL
 PLATED SPRING STEEL MOUNTING CLIP AND PLATED STEEL OPERATOR SHAFT.

FINISH:
 □MILL

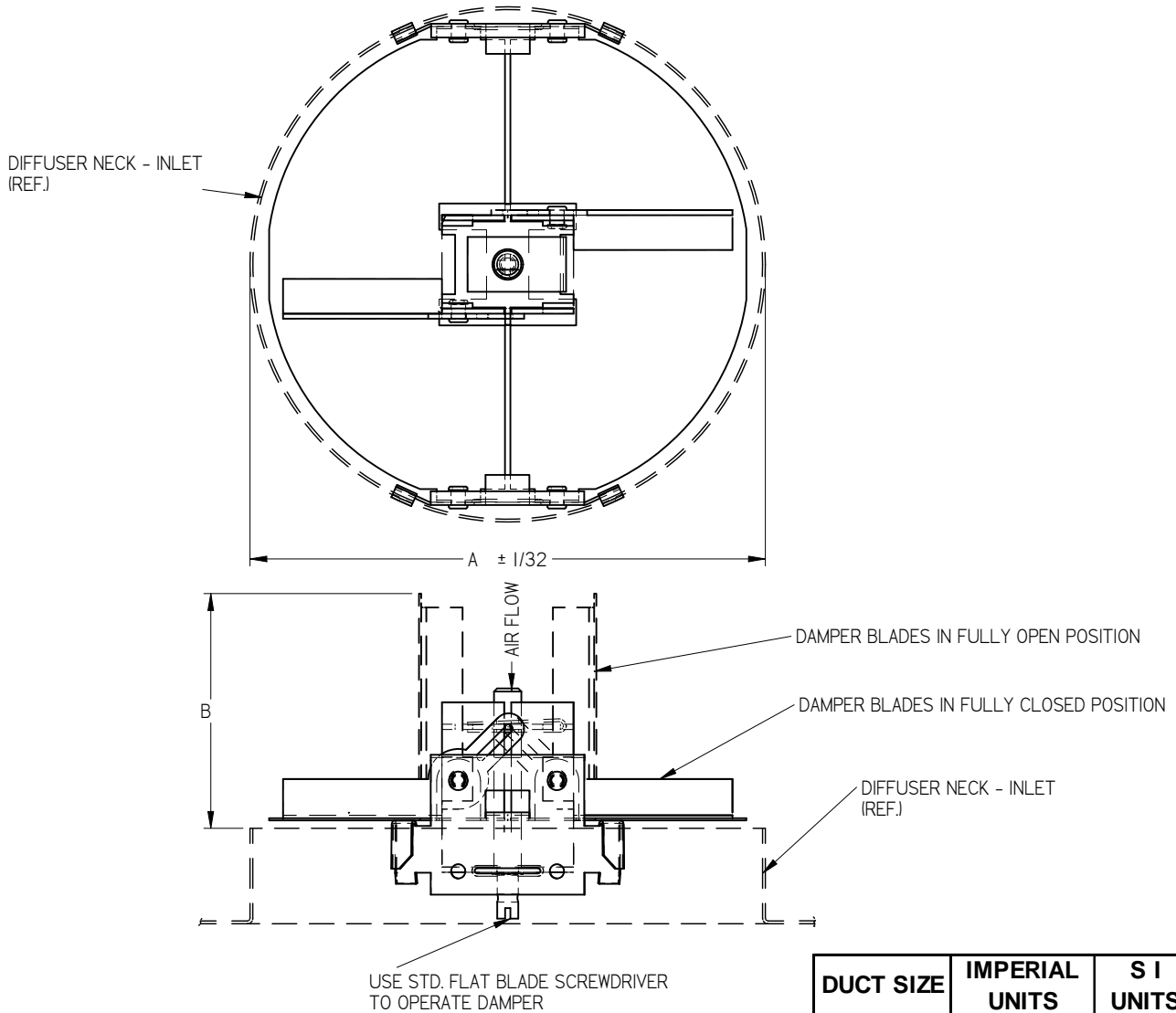
- NOTES:**
- DAMPER CONTROLS AIR VOLUME FROM FULL OPEN TO FULL CLOSED.
 - DAMPER MOUNTS DIRECTLY INTO RIGID DUCT, SIZE 5 TO 16 HAVE 3-MOUNTING HOLES, SIZE 4 HAS 2-MOUNTING HOLES.
 - RIGID DUCT APPLICATION ONLY.

DUCT SIZE NOM.	IMPERIAL UNITS		S I UNITS	
	A	B	A	B
4	3 7/8	1 3/4	98	44
5	4 7/8	2 3/4	124	57
6	5 7/8	2 3/4	150	70
7	6 7/8	3 3/4	175	82
8	7 7/8	3 3/4	200	95
10	9 7/8	4 3/4	250	120
12	11 7/8	5 3/4	302	146
14	13 7/8	6 3/4	352	171
15	14 7/8	7 3/4	378	184
16	15 7/8	7 3/4	403	197

ALL METRIC DIMENSIONS () ARE SOFT CONVERTED. IMPERIAL DIMENSIONS ARE CONVERTED TO METRIC AND ROUNDED TO THE NEAREST MILLIMETER.

PROJECT:		
ENGINEER:		
CUSTOMER:		 241592
SUBMITTAL DATE:		2013/08/26
SPEC. SYMBOL:		VCR8SS FULL FLOW DAMPER DUCT MOUNTED

VCR8ESS - FULL FLOW DAMPER DIFFUSER MOUNTED



MATERIAL:
 STAINLESS STEEL
 PLATED STEEL MOUNTING CLIP AND PLATED STEEL OPERATOR SHAFT

FINISH:
 MILL

NOTES:

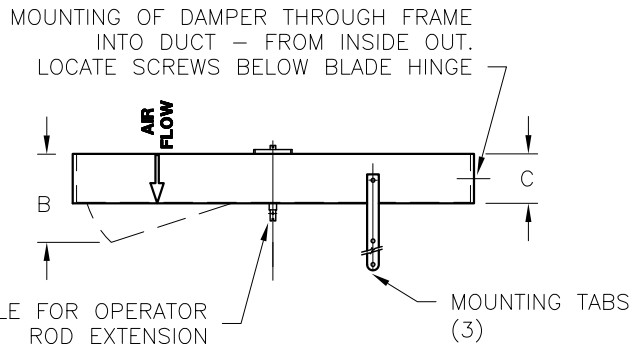
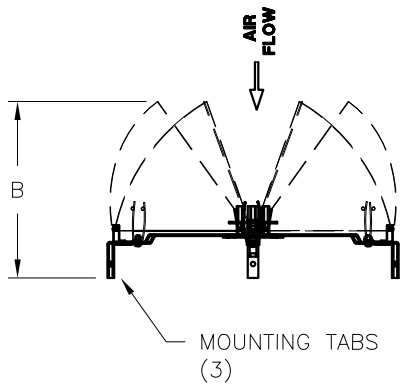
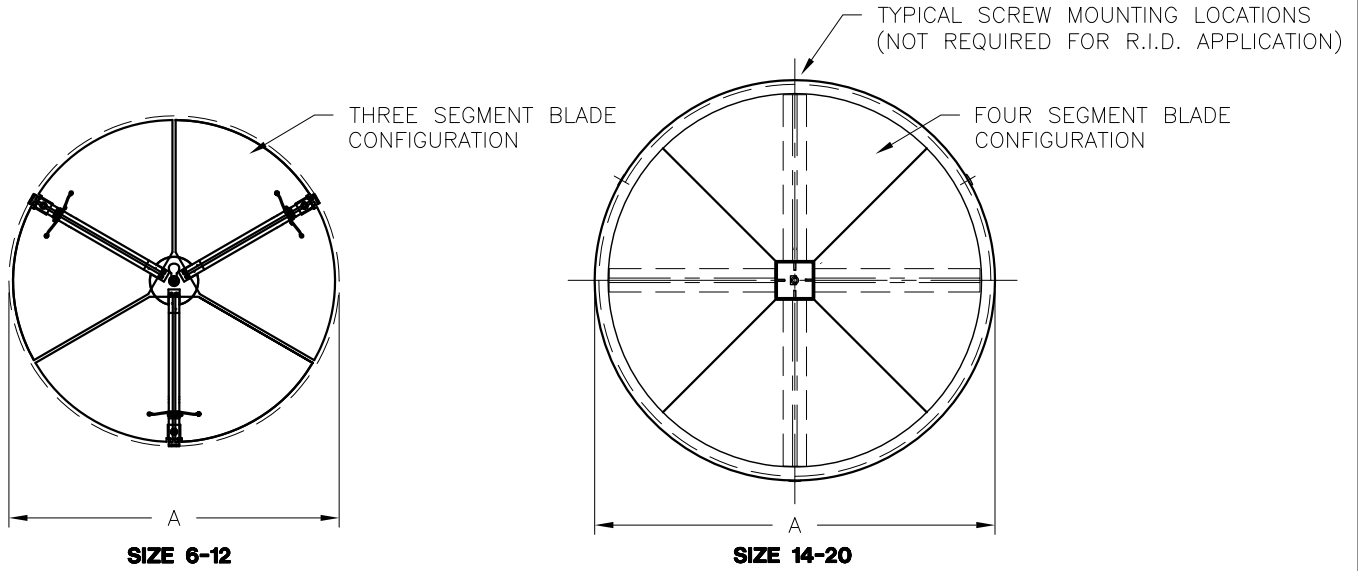
- DAMPER CONTROLS AIR VOLUME FROM FULL OPEN TO FULL CLOSED.
- DAMPER MOUNTS DIRECTLY ONTO DIFFUSER NECK-INLET. NOMINAL INLET SIZES ARE 4 TO 16.
- FLEX DUCT CONNECTION CAUTION:
 FOR UNOBSTRUCTED DAMPERING, IN TIGHT ELBOWED CONDITIONS, SET THE DAMPER BLADES IN THE FULL OPEN POSITION PRIOR TO FIELD CONNECTION.

DUCT SIZE NOM.	IMPERIAL UNITS		S I UNITS	
	A	B	A	B
4	3 7/8	1 3/4	98	44
5	4 7/8	2 3/4	124	57
6	5 7/8	2 3/4	150	70
7	6 7/8	3 3/4	175	82
8	7 7/8	3 3/4	200	95
10	9 7/8	4 3/4	250	120
12	11 7/8	5 3/4	302	146
14	13 7/8	6 3/4	352	171
15	14 7/8	7 3/4	378	184
16	15 7/8	7 3/4	403	197

ALL METRIC DIMENSIONS () ARE SOFT CONVERTED. IMPERIAL DIMENSIONS ARE CONVERTED TO METRIC AND ROUNDED TO THE NEAREST MILLIMETER.

PROJECT:		PRICE	
ENGINEER:			
CUSTOMER:		241591	FULL FLOW DAMPER DIFFUSER MOUNTED
SUBMITTAL DATE:	SPEC. SYMBOL:	2013/08/26	

MODEL VCR7 RADIAL OPPOSED BLADE DAMPER



NOTE:

VCR7 RADIAL OPPOSED BLADE VOLUME CONTROL DAMPER WITH ROLLED BORDER SLEEVE (SIZE 14-36) FOR DUCT MOUNTED INSTALLATION.

FOR MINIMUM HEIGHT, MOUNT DAMPER DIRECTLY TO DIFFUSER USING CORRECT HOLES IN MOUNTING TAB.
 THREE SEGMENT BLADE CONFIGURATION FOR SIZES 6-12 (SHOWN ABOVE)
 FOUR SEGMENT BLADE CONFIGURATION FOR SIZES 14-20 (SHOWN ABOVE)
 SIX SEGMENT BLADE CONFIGURATION FOR SIZES 24,30&36 (NOT SHOWN)

MATERIAL:

COATED STEEL

OPTION:

OPERATOR ROD EXTENSION FASTENED FROM UNDERSIDE, AS INDICATED ABOVE.

NOM. SIZE	IMPERIAL UNITS			S.I. UNITS		
	A	B	C	A	B	C
6	5 ¹³ / ₁₆ "	4"	-	148	102	-
8	7 ¹³ / ₁₆ "	4 ⁷ / ₈ "	-	198	124	-
10	9 ¹³ / ₁₆ "	5 ³ / ₄ "	-	249	146	-
12	11 ¹³ / ₁₆ "	6 ⁹ / ₁₆ "	-	300	167	-
14	13 ⁷ / ₈ "	4 ⁷ / ₈ "	2 ¹ / ₈ "	352	124	54
15	14 ⁷ / ₈ "	5 ¹ / ₈ "	2 ¹ / ₈ "	378	130	54
16	15 ⁷ / ₈ "	5 ⁵ / ₈ "	2 ¹ / ₈ "	403	143	54
18	17 ⁷ / ₈ "	6 ¹ / ₄ "	2 ¹ / ₈ "	454	159	54
20	19 ⁷ / ₈ "	7"	2 ¹ / ₈ "	505	178	54
24	23 ⁷ / ₈ "	6 ³ / ₄ "	2 ¹³ / ₁₆ "	606	172	72
30	29 ⁷ / ₈ "	8 ¹ / ₄ "	2 ¹³ / ₁₆ "	759	210	72
36	35 ⁷ / ₈ "	9 ³ / ₄ "	2 ¹³ / ₁₆ "	911	248	72

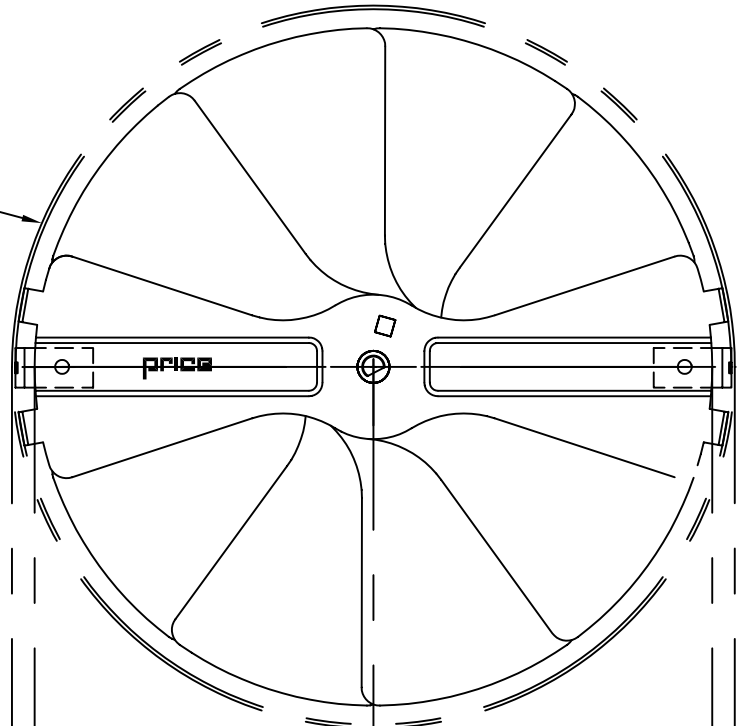
ALL METRIC DIMENSIONS () ARE SOFT CONVERTED. IMPERIAL DIMENSIONS ARE CONVERTED TO METRIC AND ROUNDED TO THE NEAREST MILLIMETER.

PROJECT:		PRICE®
ENGINEER:		
CUSTOMER:		RV
SUBMITTAL DATE:		VCR7
SPEC. SYMBOL:		RADIAL OPPOSED BLADE DAMPER
		223934
		JUNE 2009

MODEL VCR9 RADIAL DAMPER

REFERENCE OUTLINE OF DIFFUSER NECK-INLET

DUCT SIZE	IMPERIAL UNITS	S I UNITS
NOM.	A	A
6	5.50	140
8	7.50	191
10	9.50	241
12	11.50	292
14	13.50	343



TOP VIEW OF DAMPER

$\pm 1/32$

AIR FLOW

REF. DETAIL OF DIFFUSER NECK-INLET
USE STD. FLAT BLADE SCREWDRIVER TO OPERATE DAMPER.

SIDE VIEW OF DAMPER

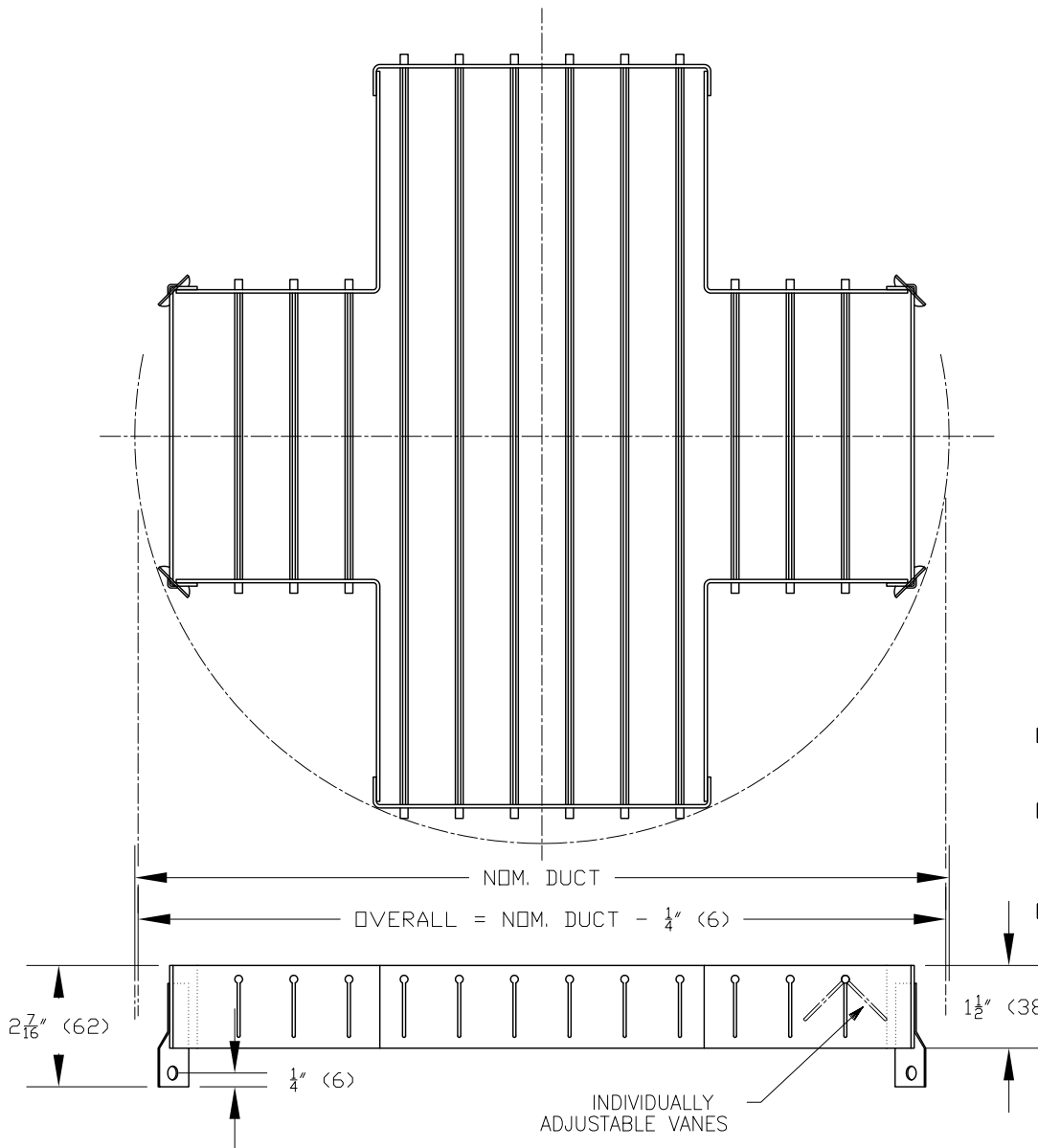
NOTE:

- MATERIAL = GALVANIZED STEEL - MILL FINISH
- DAMPER CONTROLS AIR VOLUME FROM FULL OPEN TO FULL CLOSED.
- DAMPER MOUNTS DIRECTLY INTO DIFFUSER NECK-INLET. NOMINAL INLET SIZES ARE 6 TO 14 *
- * NOT AVAILABLE FOR MODELS RCD/RCDA/RCDE
- * IN HIGH VIBRATION APPLICATIONS, IT IS RECOMMENDED THAT SHEET METAL SCREWS ARE USED ON THE RETAINING TABS

ALL METRIC DIMENSIONS () ARE SOFT CONVERTED. IMPERIAL DIMENSIONS ARE CONVERTED TO METRIC AND ROUNDED TO THE NEAREST MILLIMETER.

PROJECT:		PRICE®	
ENGINEER:			VCR9 RADIAL DAMPER DIFFUSER MOUNTED
CUSTOMER:		238391	
SUBMITTAL DATE:	SPEC. SYMBOL:	DEC. 2002	

MODEL EG EQUALIZING GRID



FINISH:

- B17 BLACK

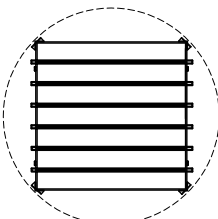
MATERIAL:

- FRAME & DAMPER - STEEL
- VANES - EXTRUDED ALUMINUM

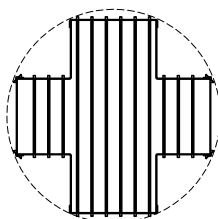
NOTES:

- FACTORY TOLERANCE: $\pm 1/32$ " (1)

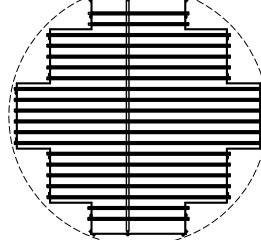
D = LISTED SIZE
4" (102)
5" (127)
6" (152)
7" (178)
8" (203)
10" (254)
12" (305)
14" (356)
15" (381)
16" (406)
18" (457)
20" (508)
24" (610)
30" (762)
36" (914)



SIZES 4-10



SIZES 12-20

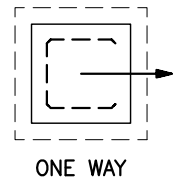
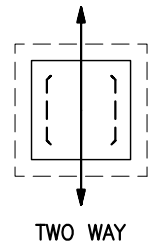
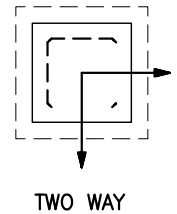
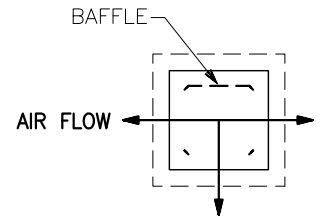
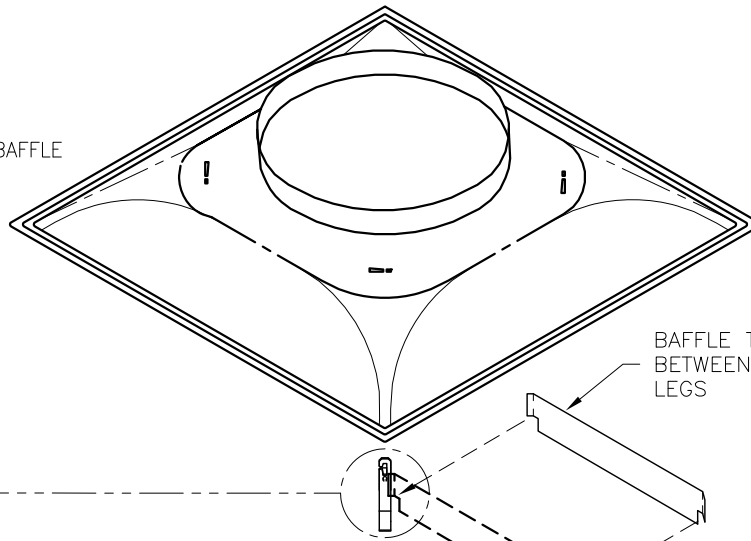
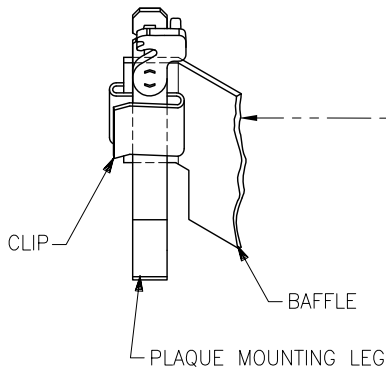
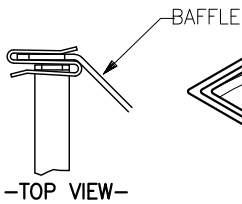
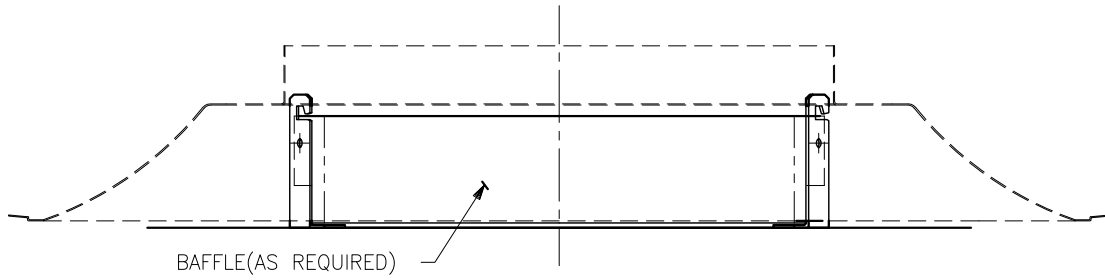


SIZES 24-36

ALL METRIC DIMENSIONS () ARE SOFT CONVERTED. IMPERIAL DIMENSIONS ARE CONVERTED TO METRIC AND ROUNDED TO THE NEAREST MILLIMETER.

PROJECT:		PRICE [®]
ENGINEER:		
CUSTOMER:		MODEL EG
SUBMITTAL DATE:		EQUALIZING GRID
SPEC. SYMBOL:		210584
		2011/02/28

AIR BAFFLE



FINISH:

- B12 OFF-WHITE BAKED ENAMEL
- B15 ALUMINUM BAKED ENAMEL

MATERIAL:

- STEEL CONSTRUCTION

NOTE:

- 1-SLIDE ONE END OF BAFFLE ONTO PLAQUE MOUNTING LEG. (AS SHOWN)
- 2-AT OPPOSITE END, BEND BAFFLE SLIGHTLY, UNTIL TABS ON BAFFLE CAN SPRING INTO PLACE ON PLAQUE MOUNTING LEG.
- AVAILABLE ONLY FOR 12", 20" & 24" NOMINAL SPD DIFFUSER.
- MFG DWGS: 12": 227377, 20": 249472, 24": 227376

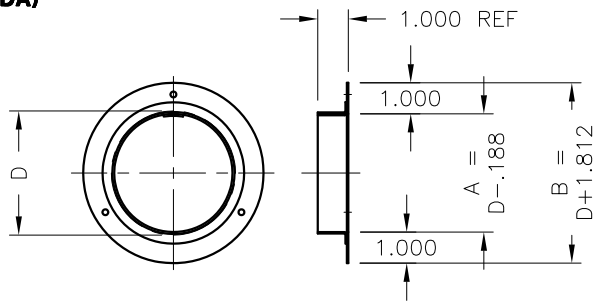
ALL METRIC DIMENSIONS () ARE SOFT CONVERTED. IMPERIAL DIMENSIONS ARE CONVERTED TO METRIC AND ROUNDED TO THE NEAREST MILLIMETER.

PROJECT:		PRICE [®]	
ENGINEER:		<i>RV</i>	AB AIR BAFFLE FOR SPD
CUSTOMER:		249473	
SUBMITTAL DATE:	SPEC. SYMBOL:	JUNE 2008	

SURFACE MOUNTING ACCESSORIES - DRF, DPR, PR

**DRF: DUCT RING FLANGE
(FOR RCD/RCDA)**

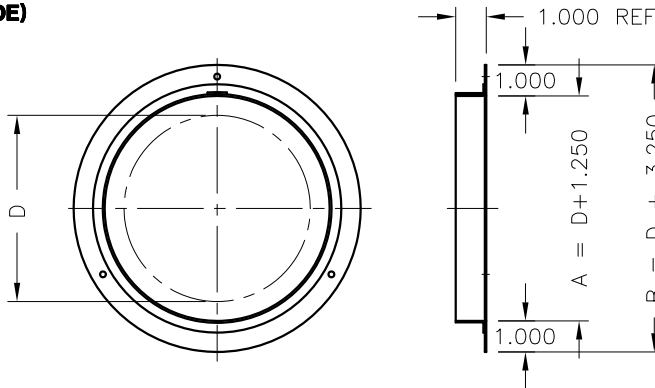
IMPERIAL UNITS (Inches)



NOM. DUCT	A	B
6	5 ³ / ₁₆	7 ¹³ / ₁₆
7	6 ¹³ / ₁₆	8 ¹³ / ₁₆
8	7 ³ / ₁₆	9 ³ / ₁₆
10	9 ³ / ₁₆	11 ³ / ₁₆
12	11 ¹³ / ₁₆	13 ¹³ / ₁₆
14	13 ¹³ / ₁₆	15 ¹³ / ₁₆
16	15 ³ / ₁₆	17 ³ / ₁₆
18	17 ¹³ / ₁₆	19 ¹³ / ₁₆
20	19 ³ / ₁₆	21 ³ / ₁₆
24	23 ¹³ / ₁₆	25 ¹³ / ₁₆
30	29 ¹³ / ₁₆	31 ¹³ / ₁₆
36	35 ¹³ / ₁₆	37 ¹³ / ₁₆

**DPR: DUCT PLASTER RING
(FOR RCDE)**

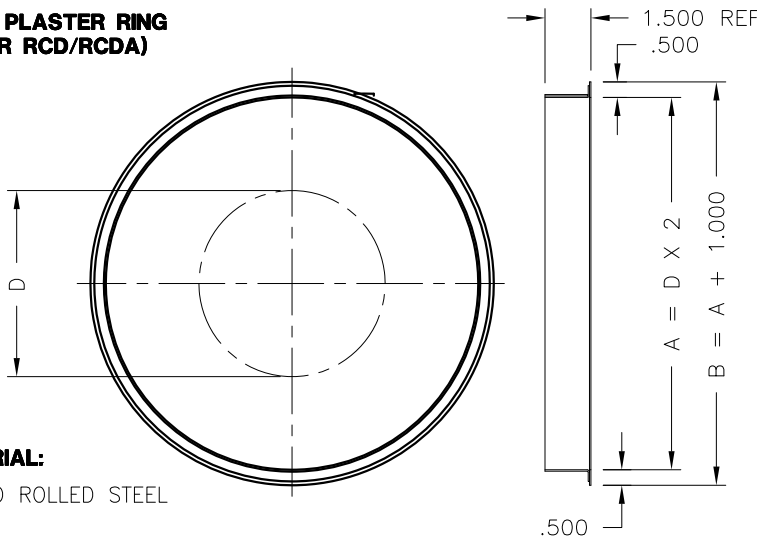
IMPERIAL UNITS (Inches)



NOM. DUCT	A	B
6	7 ¹ / ₄	9 ¹ / ₄
7	8 ¹ / ₄	10 ¹ / ₄
8	9 ¹ / ₄	11 ¹ / ₄
10	11 ¹ / ₄	13 ¹ / ₄
12	13 ¹ / ₄	15 ¹ / ₄
14	15 ¹ / ₄	17 ¹ / ₄
16	17 ¹ / ₄	19 ¹ / ₄
18	19 ¹ / ₄	21 ¹ / ₄
20	21 ¹ / ₄	23 ¹ / ₄
24	25 ¹ / ₄	27 ¹ / ₄
30	31 ¹ / ₄	33 ¹ / ₄
36	37 ¹ / ₄	39 ¹ / ₄

**PR: PLASTER RING
(FOR RCD/RCDA)**

IMPERIAL UNITS (Inches)



NOM. DUCT	A	B
4	8	9
5	10	11
6	12	13
7	14	15
8	16	17
10	20	21
12	24	25
14	28	29
16	32	33
18	36	37

MATERIAL:

- COLD ROLLED STEEL

NOTES:

- D = NOM. DUCT
- FACTORY TOL. ± 1/32 (1)

FINISH:

- B17 BLACK
(OPTIONAL FINISHES AVAILABLE)

ALL METRIC DIMENSIONS () ARE SOFT CONVERTED. IMPERIAL DIMENSIONS ARE CONVERTED TO METRIC AND ROUNDED TO THE NEAREST MILLIMETER.

PROJECT:		PRICE®
ENGINEER:		
CUSTOMER:		DRF, DPR, PR
SUBMITTAL DATE:		SERIES DUCT PLASTER RING FOR RCD
SPEC. SYMBOL:		258819
		2011/09/01